



33 Meadway, Ashford, TW15 2TJ

£2,150 PCM

33 Meadway, Ashford, TW15 2TJ

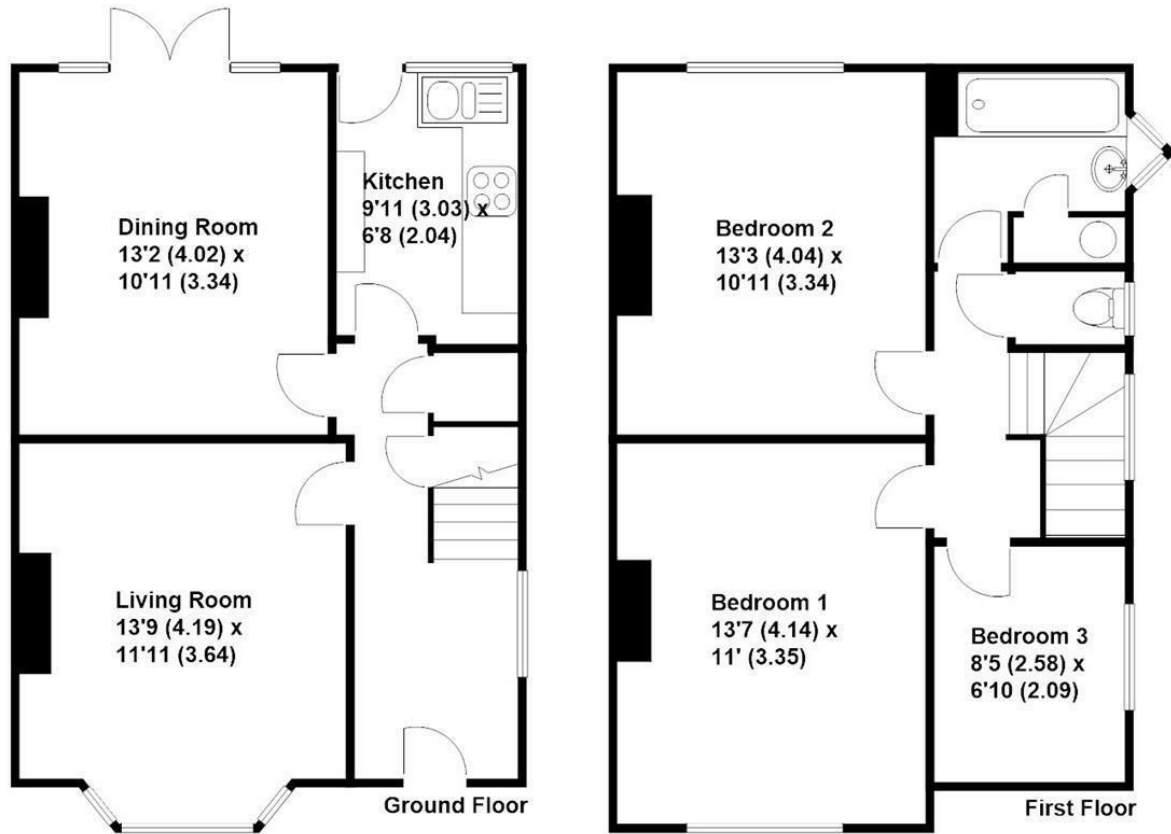
Aspen Estate Agents are delighted to introduce this three-bedroom semi-detached family home in one of Ashford's most desirable residential locations to the rental market. The property has two good-sized reception rooms, a fitted kitchen, two double bedrooms, and one single bedroom, a bathroom with a white suite and separate toilet and an enclosed rear garden with a large summer house with power. This excellent property has just been redecorated throughout, has new carpet and flooring, and will have new double-glazed windows in certain rooms. Available 24th April 2024 on an unfurnished basis. Please note some photos are from a previous listing. Council Tax Band: E. Energy Rating E.



Floor Plan

Meadway, Ashford

Approximate gross internal floor area 958 sq/ft - 89 m/sq

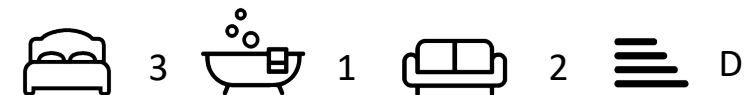


These plans are not drawn to scale and are for representational purposes only. The services, systems and appliances listed in these details have not been tested by Aspen Residential, and no guarantee is given to their operational ability or efficiency. Created by www.visionwithin.co.uk



Features

- 3 Bedroom semi-detached home
- Recently re-decorated
- New double glazing in certain windows
- Large summer house
- Popular residential location
- New carpets
- Good size garden
- Available 18th April 2024 on unfurnished basis





YARDAGE
1000

